

### Pompa Semiassiale

Sollevamento di acqua pulita per pozzi da 10"  
 • Max. contenuto di solidi (limo): 50g/m<sup>3</sup>

**Funzionamento:**

• Hz: 50 • 2 poli • γ:1

**Materiali:**

Girante semiassiale:

Corpo di stadio:

Albero:

Valvola di ritegno:

Griglia d'aspirazione:

Viteria:

**DX10**

(acqua potabile)

Ghisa, AISI 316, Bronzo

Ghisa

Acciaio Inox (AISI 420)

Ghisa

Acciaio Inox

Acciaio Inox (AISI 304)

**DX10**

(acqua di mare)

Bronzo senza zinco

Bronzo senza zinco

Acciaio Inox (Duplex)

Bronzo senza zinco

Acciaio Inox

Acciaio Inox (AISI 316)

*A richiesta si possono fornire pompe in Acciaio Inox fuso.*

Senso di rotazione:

Antiorario (visto dalla bocca di mandata)

### Mixed-Flow Pump

Clean water lifting for wells 10"  
 • Max. content of solids (silt): 50g/m<sup>3</sup>

**Operation:**

• Hz: 50 • 2 poles • γ:1

**Materials:**

Mixed flow impeller:

Pump body:

Shaft:

Non-return valve:

Suction strainer:

Nuts, bolts and screws

**DX10**

(drinkwater)

Cast-iron, AISI 316, Bronze

Cast-iron

Stainless steel (AISI 420)

Cast-iron

Stainless steel

Stainless steel (AISI 304)

**DX10**

(seawater)

Zinc free Bronze

Zinc free Bronze

Stainless steel (Duplex)

Zinc free Bronze

Stainless steel

Stainless steel (AISI 316)

Direction of rotation:

Counter-Clockwise (facing delivery side)

Tipo / Type	Motore / Motor		Q = Portata / Capacity											A V400	
			L/sec	0	22,2	27,8	33,3	38,9	41,7	44,4	47,2	50	52,8		
			L/min	0	1333	1667	2000	2333	2500	2667	2833	3000	3167		
	HP	kW	m <sup>3</sup> /h	0	80	100	120	140	150	160	170	180	190		
DX10E1L	12,5	9,2	H (m)	32	25	23	20	17	15	13	11			21	
DX10E1F	15	11		35	28	26	24	21	19	17	16	14			25
DX10E1A	20	15		38	31	30	28	25	24	22	21	19	17		32
DX10E2G	30	22		68	53	49	44	39	35	31	27				45
DX10E2A	40	30		76	63	60	56	51	48	45	42	38	34		61
DX10E3L	40	30		98	76	70	62	53	47	41	34				61
DX10E3F	50	37		108	87	81	74	65	60	54	48	42			81
DX10E3A	60	45		117	97	92	86	78	74	69	64	58	52		89
DX10E4G	60	45		138	108	100	91	79	72	64	56		55		89
DX10E4D	75	55		152	122	114	106	94	87	80	72	63	69		108
DX10E4A	75	55		156	129	123	114	104	98	92	85	77	69		108
DX10E5D	85	63		190	152	143	132	118	109	100	90	79	86		122
DX10E5A	100	75		195	161	153	143	130	123	115	106	96	83		145
DX10E6D	100	75		228	182	171	158	142	131	120	108	95	103		145
DX10E6A	125	92		234	194	184	171	156	147	137	128	116	120		178
DX10E7A	150	110		273	226	215	200	182	172	160	149	135	137		212
DX10E8A	180	132	312	258	245	228	208	196	183	170	154			258	

Poles: 2  
 Hz: 50  
 Q (m<sup>3</sup>/h): 80-190  
 H(m): 11-258  
 kW: 9,2 - 132

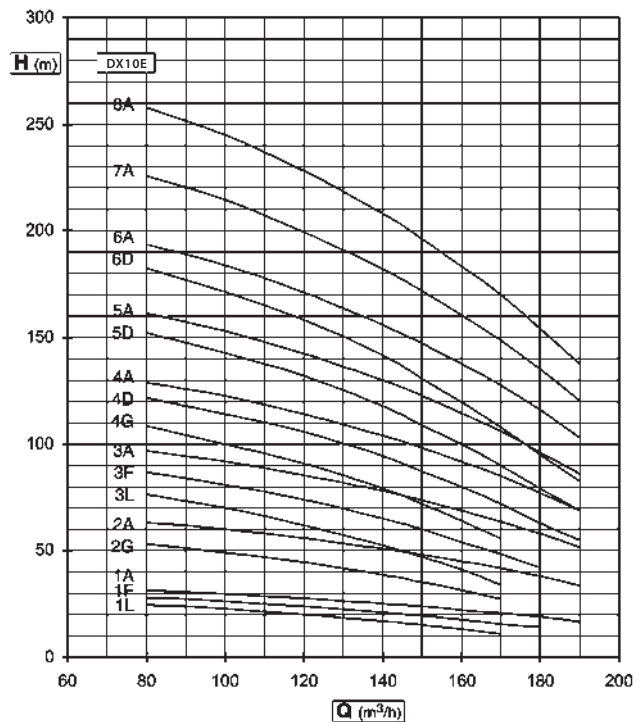
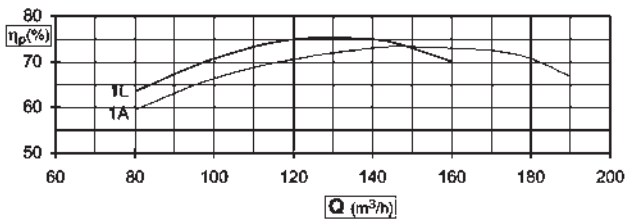
□ Tolleranze / Tolerances: ISO 9906 - Annex 2

■ Corrente massima assorbita (motore) a 400 V /  
Max absorbed current (motor) at 400 V

⚡ Min. recommended head of water above pump suction : m

☆ Le potenze indicate sono valide per accoppiamenti standard.  
Su specifica richiesta possono essere impiegati motori di potenza superiore. /  
The shown motor ratings are for standard couplings.  
Motors with more or less ratings can be utilized to client specific request.

\* I dati qui riportati possono essere modificati senza preavviso. /  
The above data may change without notice.



Tipo / Type	Motore / Motor		Q = Portata / Capacity											
			L/sec	0	25	27,8	33,3	38,9	44,4	50	55,6	61,1	66,7	A V400
			L/min	0	1500	1667	2000	2333	2667	3000	3333	3667	4000	
HP	kW	m <sup>3</sup> /h	0	90	100	120	140	160	180	200	220	240		
DX10G1N	15	11	H (m)	31	23	22	21	19	17	15	12	8	5	25
DX10G1G	17,5	13		36	27	26	25	23	21	20	17	14	11	29
DX10G1A	25	18,5		42	34	33	31	29	28	26	24	21	18	38
DX10G2L	30	22		68	51	49	46	42	39	34	29	23	15	45
DX10G2F	40	30		78	60	58	54	51	48	44	39	34	28	61
DX10G2A	50	37		84	69	67	63	60	56	53	48	43	36	81
DX10G3F	60	45		119	92	89	83	78	73	68	60	52	42	89
DX10G3A	75	55		129	105	102	97	91	86	81	74	66	56	108
DX10G4F	75	55		159	123	118	111	104	98	90	80	70	56	108
DX10G4A	100	75		172	140	136	129	122	115	108	99	88	74	145
DX10G5F	100	75		199	154	158	139	131	122	113	101	87	71	145
DX10G5A	125	92		215	175	171	161	152	144	135	124	110	93	178
DX10G6F	125	92		239	185	179	167	157	146	135	121	104	85	178
DX10G6D	150	110		248	196	191	179	169	160	149	135	118	98	212
DX10G6A	150	110		258	210	205	193	182	172	161	148	131	112	212
DX10G7D	180	132		290	228	222	209	197	186	174	158	138	114	258
DX10G7A	180	132		301	245	239	225	213	201	188	173	153	130	258

Poles: 2  
 Hz: 50  
 Q (m<sup>3</sup>/h): 90-240  
 H(m): 5-245  
 kW: 11 - 132

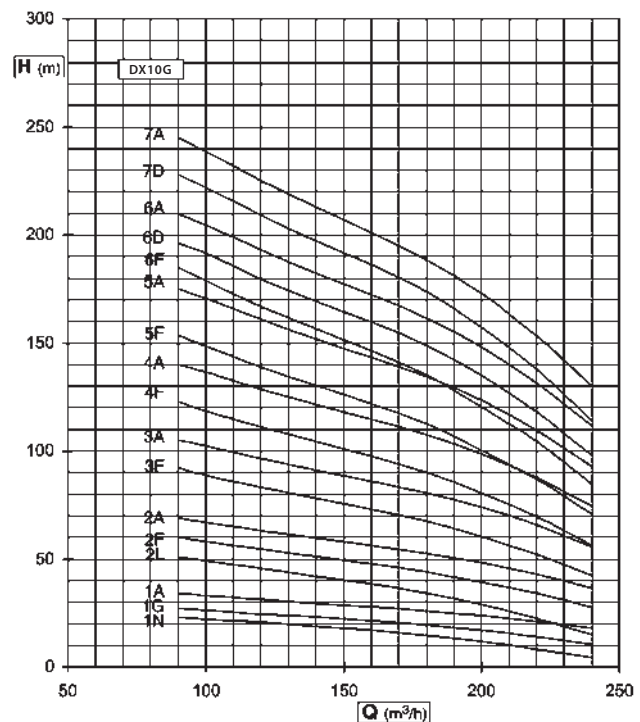
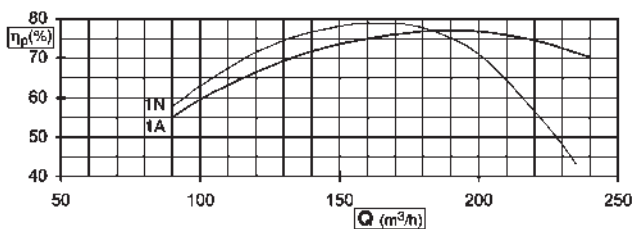
□ Tolleranze / Tolerances: ISO 9906 - Annex 2

■ Corrente massima assorbita (motore) a 400 V /  
Max absorbed current (motor) at 400 V

⚡ Min. recommended head of water above pump suction : m

☆ Le potenze indicate sono valide per accoppiamenti standard.  
Su specifica richiesta possono essere impiegati motori di potenza superiore. /  
The shown motor ratings are for standard couplings.  
Motors with more or less ratings can be utilized to client specific request.

★ I dati qui riportati possono essere modificati senza preavviso. /  
The above data may change without notice.



Tipo / Type	Motore / Motor		Q = Portata / Capacity											
			L/sec	0	27,8	33,3	38,9	44,4	50	55,6	61,1	66,7	72,2	A V400
			L/min	0	1667	2000	2333	2667	3000	3333	3667	4000	4333	
HP	kW	m <sup>3</sup> /h	0	100	120	140	160	180	200	220	240	260		
DX10H1L	20	15	H (m)	34	27	26	25	24	23	21	19	16	13	32
DX10H1F	25	18,5		38	31	30	29	28	27	25	23	21	18	38
DX10H1A	35	26		42	36	35	33	32	31	29	28	26	24	53
DX10H2N	35	26		63	50	48	45	44	41	37	33	26	20	53
DX10H2L	40	30		68	55	52	50	48	46	43	39	33	26	61
DX10H2F	50	37		76	64	61	59	56	54	51	47	43	37	61
DX10H2A	75	55		84	72	70	67	64	62	59	56	53	48	108
DX10H3G	75	55		111	92	88	84	81	77	72	66	58	49	108
DX10H3F	75	55		117	97	94	90	86	82	78	72	65	56	108
DX10H3A	100	75		129	111	107	102	98	95	91	86	81	74	145
DX10H4F	100	75		156	130	125	120	115	110	103	96	87	75	145
DX10H5G	125	92		185	154	147	141	135	128	120	110	97	82	178
DX10H5F	125	92		195	162	156	150	144	137	129	120	109	94	178
DX10H5D	150	110		201	171	165	158	151	145	139	132	122	109	212
DX10H6F	180	132		234	194	187	180	173	165	155	144	130	113	258
DX10H6D	180	132		241	205	198	189	181	174	167	158	146	131	258
DX10H7F	180	132		273	227	218	210	201	192	181	168	152	131	258
DX10H7D	200	147	281	239	231	221	211	203	195	184	170	152	300	
DX10H7A	230	170	300	258	249	239	229	221	211	201	189	172	348	

Poles: 2  
 Hz: 50  
 Q (m<sup>3</sup>/h): 100-260  
 H(m): 13-258  
 kW: 15-170

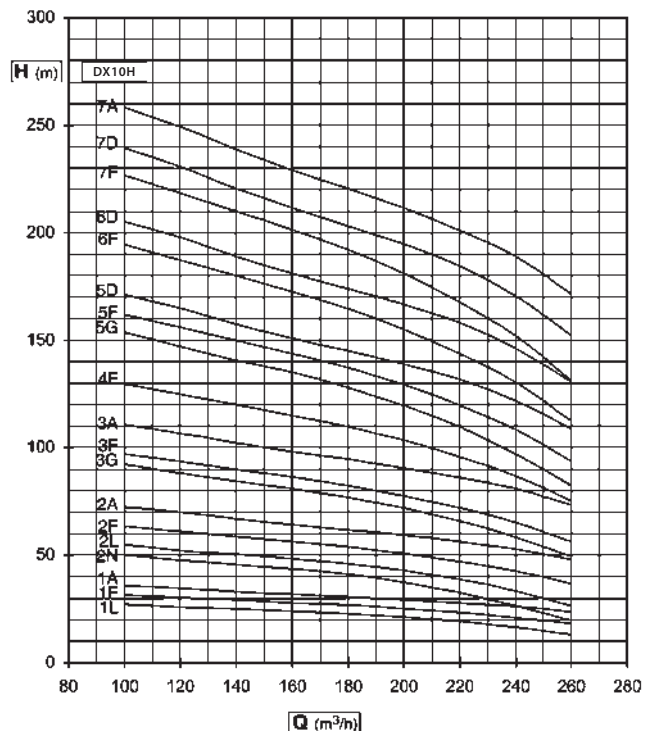
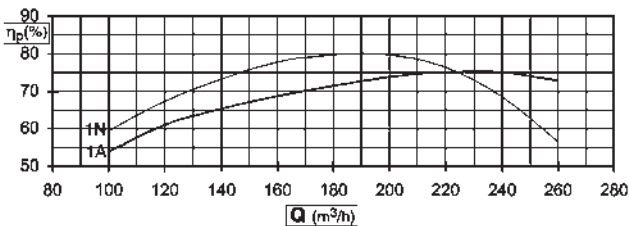
□ Tolleranze / Tolerances: ISO 9906 - Annex 2

■ Corrente massima assorbita (motore) a 400 V /  
 Max absorbed current (motor) at 400 V

⚡ Min. recommended head of water above pump suction : m

☆ Le potenze indicate sono valide per accoppiamenti standard.  
 Su specifica richiesta possono essere impiegati motori di potenza superiore. /  
 The shown motor ratings are for standard couplings.  
 Motors with more or less ratings can be utilized to client specific request.

\* I dati qui riportati possono essere modificati senza preavviso. /  
 The above data may change without notice.





Tipo / Type	Motore / Motor		Q = Portata / Capacity											A V400
			L/sec	0	44,4	50	61,1	72,2	77,8	83,3	88,9	94,4	100	
			L/min	0	2667	3000	3667	4333	4667	5000	5333	5667	6000	
	HP	kW	m <sup>3</sup> /h	0	160	180	220	260	280	300	320	340	360	
DX10L1G	35	26	H (m)	35	28	27	26	23	21	19	17	15	12	53
DX10L1A	40	30		41	34	33	31	29	27	26	23	21	18	61
DX10L2N	50	37		63	49	48	45	39	35	30	25			81
DX10L2G	60	45		72	57	55	52	47	43	39	35	29	23	89
DX10L2A	85	63		82	69	67	63	58	55	52	47	42	36	122
DX10L3L	85	63		106	81	79	74	66	60	53	45	36		122
DX10L3F	100	75		116	95	92	86	78	72	66	59	51	41	145
DX10L3A	125	92		126	106	103	97	89	85	79	72	64	55	178
DX10L4G	125	92		146	117	113	106	96	88	80	71	60	48	178
DX10L4D	150	110		157	132	129	121	112	104	96	88	77	64	212
DX10L4A	180	132		168	141	137	129	119	113	105	96	85	73	258
DX10L5G	150	110		183	146	142	133	120	110	100	89	75	60	212
DX10L5D	180	132		197	166	161	151	140	130	120	110	96	80	258
DX10L6G	180	132		219	175	170	159	143	132	120	106	90	72	258
DX10L7L	200	147		248	190	183	172	154	140	124	105	84		300
DX10L7F	230	170		270	221	214	201	182	169	154	137	119	95	348
DX10L7D	260	190		275	232	225	211	195	182	168	154	134	112	403
DX10L7A •	300	220		294	246	240	225	209	197	184	167	148	127	425

Poles: 2  
 Hz: 50  
 Q (m<sup>3</sup>/h): 160-360  
 H(m): 12-246  
 kW: 26-220

• per pozzi da 12"/ for 12" wells

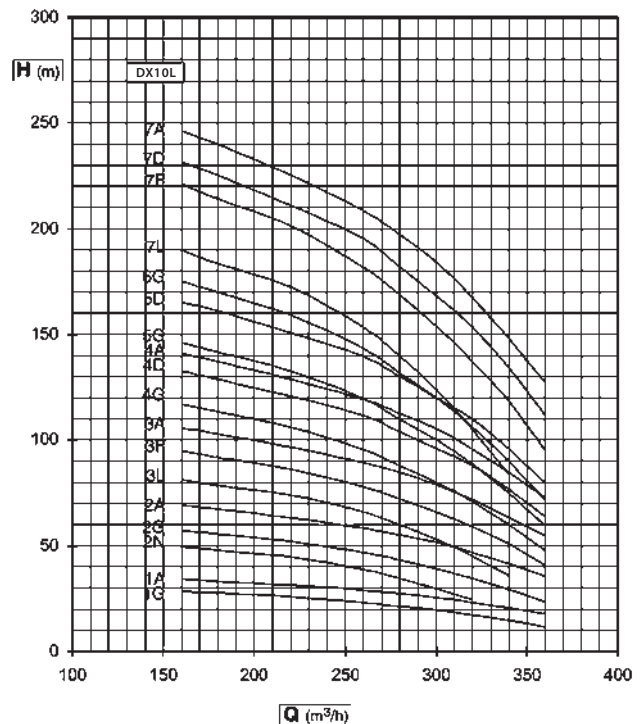
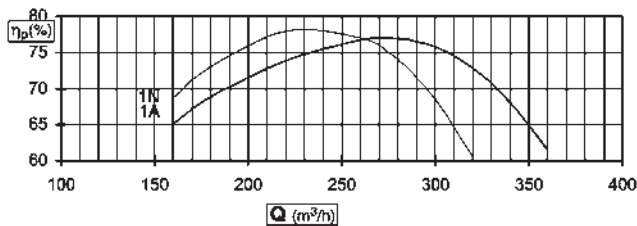
□ Tolleranze / Tolerances: ISO 9906 - Annex 2

■ Corrente massima assorbita (motore) a 400 V /  
 Max absorbed current (motor) at 400 V

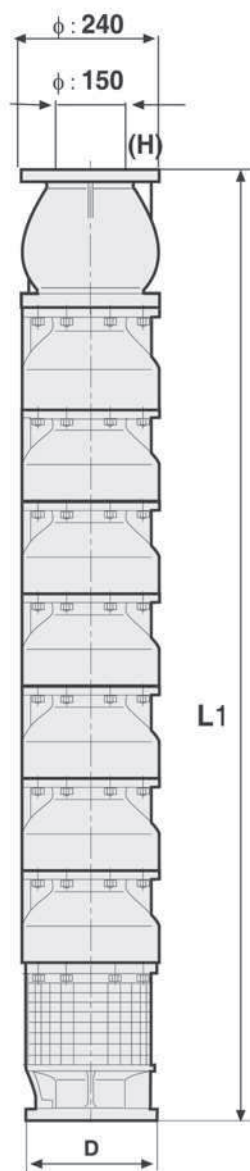
✦ Min. recommended head of water above pump suction : m

☆ Le potenze indicate sono valide per accoppiamenti standard.  
 Su specifica richiesta possono essere impiegati motori di potenza superiore. /  
 The shown motor ratings are for standard couplings.  
 Motors with more or less ratings can be utilized to client specific request.

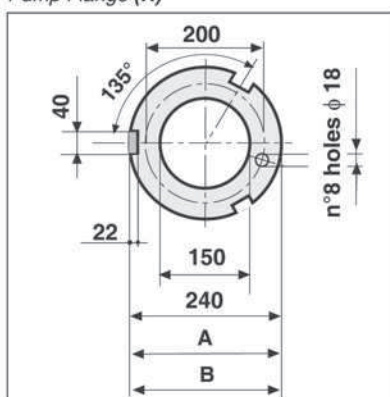
★ I dati qui riportati possono essere modificati senza preavviso. /  
 The above data may change without notice.



## Dimensioni d'ingombro / Overall dimensions encombrement



Pump Flange (H)



Pompa Pump Pompe	DOL	Y/D	Motor
	A	B	D
	mm	mm	mm
DX10.. + 6"	240	240	144
DX10.. + 8"	246	246	192
DX10.. + 10"	248	248	237
DX10.. + 12"	248	248	286

Pompa / Pump	Motore/Motor 6"		Motore/Motor 8"		Motore/Motor 10"		Motore/Motor 12"	
	L1 mm	Weight kg	L1 mm	Weight kg	L1 mm	Weight kg	L1 mm	Weight kg
DX10....1	738	70	766	72	766	74	791	80
DX10....2	903	91	931	93	931	97	956	103
DX10....3	1068	112	1096	114	1096	116	1121	122
DX10....4	1233	133	1261	135	1261	139	1286	145
DX10....5	1398	154	1426	156	1426	158	1451	164
DX10....6	1563	175	1591	177	1591	179	1616	185
DX10....7	1728	196	1756	198	1756	200	1781	206
DX10....8	1893	217	1921	218	1921	220	1946	226