

### Pompa Semiassiale

Sollevamento di acqua pulita per pozzi da 12"  
 • Max. contenuto di solidi (limo): 50g/m<sup>3</sup>

**Funzionamento:**

• Hz: 50 • 2 poli • γ:1

**Materiali:**

Girante semiassiale:

Corpo di stadio:

Albero:

Valvola di ritegno:

Griglia d'aspirazione:

Viteria:

**DX12**

(acqua potabile)

Ghisa, AISI 316, Bronzo

Ghisa

Acciaio Inox (AISI 420)

Ghisa

Acciaio Inox

Acciaio Inox (AISI 304)

**DX12**

(acqua di mare)

Bronzo senza zinco

Bronzo senza zinco

Acciaio Inox (Duplex)

Bronzo senza zinco

Acciaio Inox

Acciaio Inox (AISI 316)

*A richiesta si possono fornire pompe in Acciaio Inox fuso.*

Senso di rotazione:

Antiorario (visto dalla bocca di mandata)

### Mixed-Flow Pump

Clean water lifting for wells 12"  
 • Max. content of solids (silt): 50g/m<sup>3</sup>

**Operation:**

• Hz: 50 • 2 poles • γ:1

**Materials:**

Mixed flow impeller:

Pump body:

Shaft:

Non-return valve:

Suction strainer:

Nuts, bolts and screws

**DX12**

(drinkwater)

Cast-iron, AISI 316, Bronze

Cast-iron

Stainless steel (AISI 420)

Cast-iron

Stainless steel

Stainless steel (AISI 304)

**DX12**

(seawater)

Zinc free Bronze

Zinc free Bronze

Stainless steel (Duplex)

Zinc free Bronze

Stainless steel

Stainless steel (AISI 316)

Direction of rotation:

Counter-Clockwise (facing delivery side)

Tipo / Type	Motore / Motor		Q = Portata / Capacity												
			L/sec	0	38,9	44,4	55,6	61,1	66,7	72,2	77,8	83,3	88,9	A V400	
			L/min	0	2333	2667	3333	3667	4000	4333	4667	5000	5333		
HP	kW	m <sup>3</sup> /h	0	140	160	200	220	240	260	280	300	320			
DX12E1F	30	22	H (m)	44	33	31	27	25	23	20	16	11		46	
DX12E1A	35	26		48	37	35	32	30	28	25	22	18	13		54
DX12E2L	50	37		78	55	53	45	41	35	29	22				75
DX12E2F	60	45		88	66	63	55	51	46	40	32	23			89
DX12E2A	75	55		97	74	71	64	61	56	51	44	36	27		108
DX12E3F	85	63		135	101	96	85	78	70	61	50	35			122
DX12E3D	100	75		140	106	102	92	85	78	69	59	45	29		145
DX12E3A	125	92		148	113	109	98	93	86	78	67	55	42		178
DX12E4D	125	92		187	142	136	122	113	104	92	79	60	39		178
DX12E4A	150	110		197	151	145	131	124	114	103	89	73	55		217
DX12E5D	150	110		234	177	170	153	142	130	116	99	75	49		217
DX12E5A	180	132		247	189	182	164	155	143	129	111	92	69		258
DX12E6D	200	147		281	213	204	183	170	156	139	118	90	59		300
DX12E7F	200	147		315	236	223	197	182	163	141	116	81			300
DX12E7D	230	170		327	248	238	214	198	182	162	138	105	69		348
DX12E8F	230	170		360	270	255	226	208	186	162	132	92			348
DX12E8D	260	190		374	284	272	244	226	208	185	158	120	78		369
DX12E8A	300	220		394	302	290	262	247	229	206	178	146	111		425
DX12E9A	340	250	444	340	327	295	278	257	232	200	165	125		482	

Poles: 2  
 Hz: 50  
 Q (m<sup>3</sup>/h): 140-320  
 H(m): 11-340  
 kW: 22-250

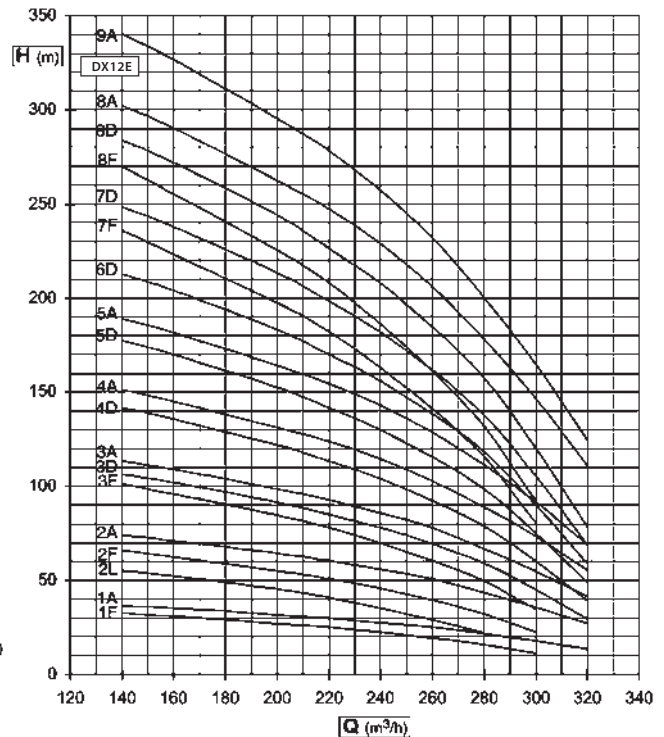
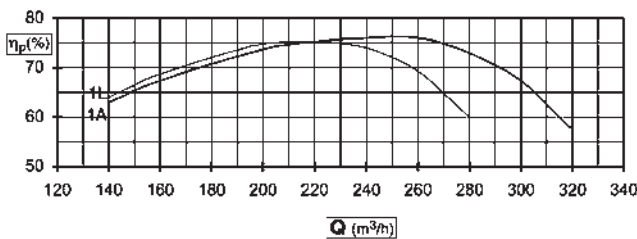
□ Tolleranze / Tolerances: ISO 9906 - Annex 2

■ Corrente massima assorbita (motore) a 400 V /  
Max absorbed current (motor) at 400 V

⚡ Min. recommended head of water above pump suction : m

☆ Le potenze indicate sono valide per accoppiamenti standard.  
Su specifica richiesta possono essere impiegati motori di potenza superiore. /  
The shown motor ratings are for standard couplings.  
Motors with more or less ratings can be utilized to client specific request.

\* I dati qui riportati possono essere modificati senza preavviso. /  
The above data may change without notice.



Tipo / Type	Motore / Motor		Q = Portata / Capacity											A V400
			L/sec	0	44,4	55,6	66,7	72,2	77,8	83,3	88,9	94,4	100	
			L/min	0	2667	3333	4000	4333	4667	5000	5333	5667	6000	
HP	kW	m <sup>3</sup> /h	0	160	200	240	260	280	300	320	340	360		
DX12G1G	30	22	H (m)	43	31	28	25	24	22	19	17	14		46
DX12G1F	35	26		47	33	30	28	26	25	23	20	17	15	54
DX12G1D	40	30		49	36	33	30	29	27	25	23	20	17	61
DX12G1A	50	37		52	38	35	32	31	29	27	25	23	20	75
DX12G2N	50	37		74	52	47	41	37	32	27	21	15		75
DX12G2G	60	45		87	62	57	51	48	44	39	34	28		89
DX12G2D	75	55		100	72	66	61	58	55	51	46	41	35	108
DX12G2A	85	63		104	76	70	65	62	59	55	51	46	41	122
DX12G3F	100	75		145	103	94	87	82	76	70	63	54	45	145
DX12G3A	125	92		160	116	107	99	95	90	85	78	71	63	178
DX12G4D	150	110		204	147	134	124	118	112	104	94	84	72	217
DX12G4A	180	132		213	155	143	132	126	120	113	104	94	84	258
DX12G6G	180	132		268	191	174	157	147	134	120	104	87		258
DX12G6F	200	147		291	206	187	174	164	152	140	126	108	90	300
DX12G6D	230	170		306	220	202	186	177	168	156	142	126	108	330
DX12G6A	260	190		319	233	215	198	189	180	169	156	141	126	369
DX12G7D	260	190		357	257	235	217	207	196	182	165	147	126	369
DX12G7A	300	220		372	272	251	231	221	210	197	182	165	147	425
DX12G8A	340	250		426	310	286	264	252	240	226	208	188	168	482

Poles: 2  
 Hz: 50  
 Q (m<sup>3</sup>/h): 160-360  
 H(m): 14-310  
 kW: 22-250

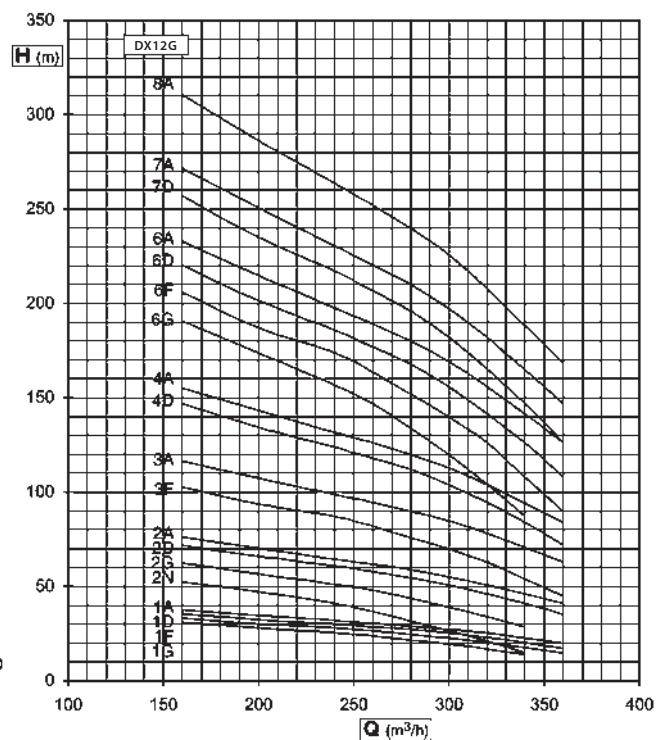
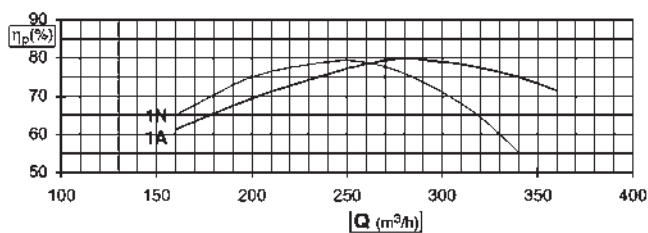
□ Tolleranze / Tolerances: ISO 9906 - Annex 2

■ Corrente massima assorbita (motore) a 400 V /  
Max absorbed current (motor) at 400V

✦ Min. recommended head of water above pump suction : m

☆ Le potenze indicate sono valide per accoppiamenti standard.  
Su specifica richiesta possono essere impiegati motori di potenza superiore. /  
The shown motor ratings are for standard couplings.  
Motors with more or less ratings can be utilized to client specific request.

\* I dati qui riportati possono essere modificati senza preavviso. /  
The above data may change without notice.



Tipo / Type	Motore / Motor		H (m)											A ■ V400
			L/sec	0	55,6	69,4	83,3	88,9	94,4	100	105,6	111,1	116,7	
	HP	kW	L/min	0	3333	4167	5000	5333	5667	6000	6333	6667	7000	
			m <sup>3</sup> /h	0	200	250	300	320	340	360	380	400	420	
DX12H1N	35	26		36	27	24	21	19	17	14	12	9		53
DX12H1L	40	30		40	29	27	24	22	20	18	16	12		61
DX12H1D	50	37		48	36	34	32	30	29	27	25	22		81
DX12H1A	60	45		49	38	36	34	32	31	29	27	25	23	89
DX12H2N	75	55		73	54	49	43	39	34	29	23	17		108
DX12H2F	85	63		92	69	65	59	57	53	49	45	40		122
DX12H2D	100	75		96	74	69	64	62	58	55	50	45		145
DX12H3N	100	75		112	83	75	66	59	52	45	36	27		145
DX12H3G	125	92	H (m)	132	99	92	83	78	72	65	58	50		178
DX12H3D	150	110		147	113	106	99	94	89	84	77	69		217
DX12H3A	180	132		151	118	111	104	101	96	91	84	78	70	258
DX12H4G	180	132		176	131	122	110	104	96	87	77	66		258
DX12H4F	180	132		188	141	132	121	115	108	101	92	82		258
DX12H4D	200	147		196	150	141	131	126	119	112	102	92		300
DX12H5G	200	147		220	164	153	138	130	120	109	97	83		300
DX12H5F	230	170		235	177	165	152	144	135	126	115	102		348
DX12H5D	260	190		245	188	176	164	157	149	140	128	116		369
DX12H5A	260	190		252	197	185	174	168	160	152	141	130	116	369
DX12H6F	260	190		282	212	198	182	173	162	151	138	122		369
DX12H6D	300	220		294	225	211	197	188	179	167	153	139		425
DX12H6A	340	250		302	236	222	209	201	192	182	169	155	139	482
DX12H7D	340	250		343	263	246	230	220	209	195	179	162		482
DX12H8F	340	250		376	282	264	242	231	216	201	184	163		482
DX12H8D •	400	294		392	300	282	263	251	238	223	204	185		551
DX12H8A •	450	330		402	314	296	278	268	256	242	225	207	186	620

Poles: 2  
 Hz: 50  
 Q (m<sup>3</sup>/h): 200-420  
 H(m): 9-314  
 kW: 26-330

• per pozzi da 14"/ for 14" wells

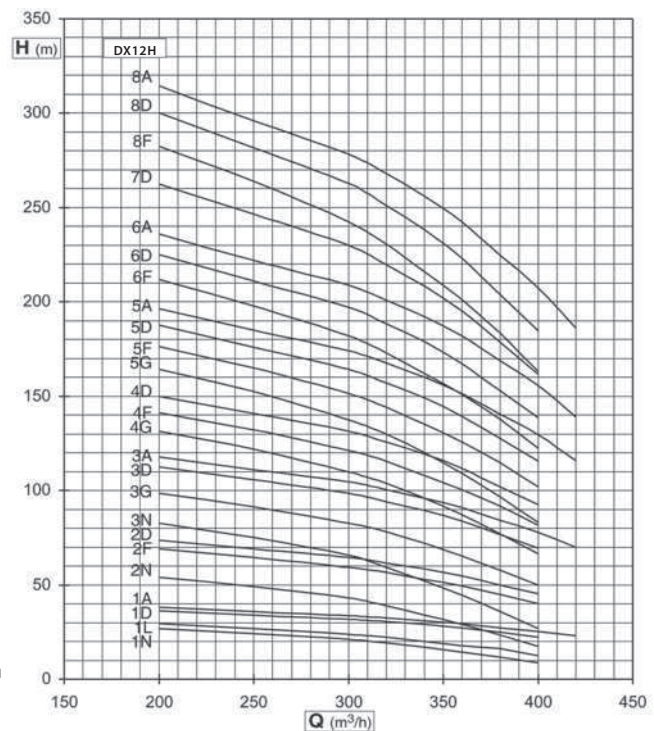
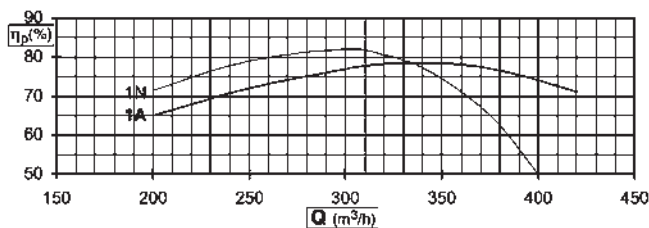
□ Tolleranze / Tolerances: ISO 9906 - Annex 2

■ Corrente massima assorbita (motore) a 400 V /  
 Max absorbed current (motor) at 400 V

✦ Min. recommended head of water above pump suction : m

☆ Le potenze indicate sono valide per accoppiamenti standard.  
 Su specifica richiesta possono essere impiegati motori di potenza superiore. /  
 The shown motor ratings are for standard couplings.  
 Motors with more or less ratings can be utilized to client specific request.

\* I dati qui riportati possono essere modificati senza preavviso. /  
 The above data may change without notice.



Tipo / Type	Motore / Motor		Q = Portata / Capacity											A V400	
			L/sec	0	69,4	83,3	94,4	100	105,6	111,1	122,2	133,3	141,7		
			L/min	0	4167	5000	5667	6000	6333	6667	7333	8000	8500		
	HP	kW	m <sup>3</sup> /h	0	250	300	340	360	380	400	440	480	510		
DX12L1L	50	37	H (m)	40	30	28	26	25	23	22	17	13		81	
DX12L1F	60	45		47	35	33	32	31	30	29	26	21	16		89
DX12L1A	75	55		49	39	37	36	36	35	33	30	26	22		108
DX12L2N	85	63		74	56	51	47	45	42	39	30	19			122
DX12L2L	100	75		81	61	57	53	50	47	44	35	26			145
DX12L2F	125	92		95	71	67	64	63	61	58	52	42	33		178
DX12L2A	150	110		100	79	75	73	72	70	67	61	53	44		217
DX12L3L	150	110		124	93	87	81	77	72	67	54	40			217
DX12L3G	180	132		134	101	95	89	85	81	78	67	54			258
DX12L3F	180	132		145	108	102	99	96	93	88	79	65	51		258
DX12L3D	200	147		149	115	109	104	101	98	95	87	73	60		300
DX12L3A	230	170		153	121	116	112	110	107	103	94	81	68		348
DX12L4G	230	170		179	135	126	118	113	108	104	90	72			348
DX12L4F	230	170		193	144	136	132	128	124	118	106	86	68		348
DX12L4D	260	190		199	154	145	138	134	130	126	116	97	80		369
DX12L5G	260	190		224	169	158	148	141	135	130	112	90			369
DX12L5F	300	220		242	180	171	165	161	155	148	132	108	85		425
DX12L5D	340	250		249	192	182	173	168	163	158	145	121	100		482
DX12L6F	340	250		290	216	205	197	192	186	177	158	130	102		482
DX12L7G •	400	294		314	237	221	207	199	190	181	157	126			551
DX12L7F •	400	294	338	252	240	230	224	217	206	185	151	119		551	
DX12L8G •	450	330	358	270	253	236	226	216	207	179	144			620	

Poles: 2  
 Hz: 50  
 Q (m<sup>3</sup>/h): 250-510  
 H(m): 13-270  
 kW: 37-330

• per pozzi da 14"/ for 14" wells

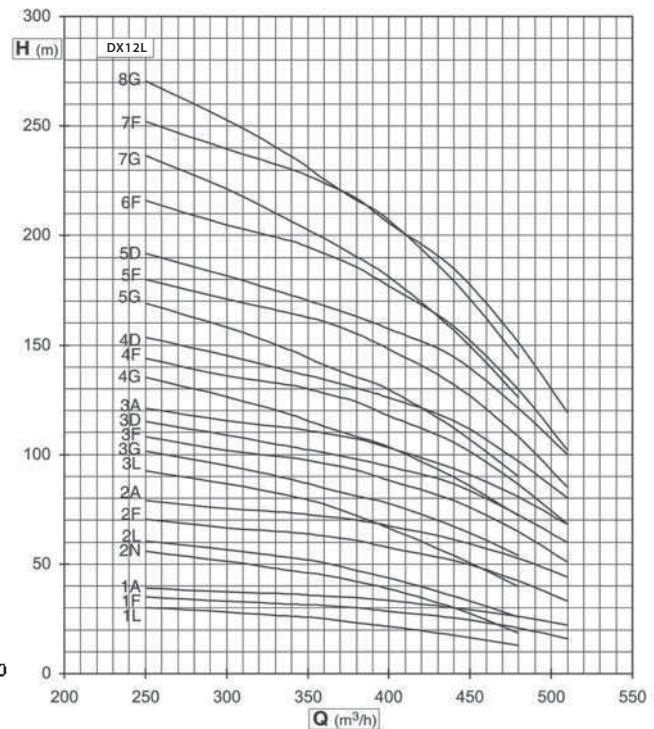
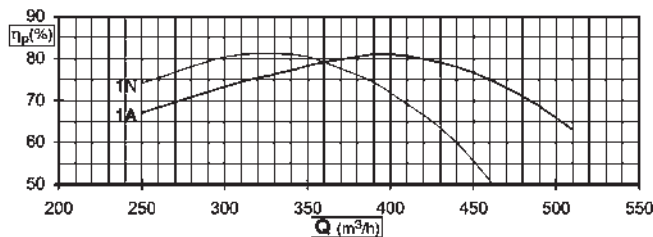
□ Tolleranze / Tolerances: ISO 9906 - Annex 2

■ Corrente massima assorbita (motore) a 400 V /  
 Max absorbed current (motor) at 400 V

⚡ Min. recommended head of water above pump suction : m

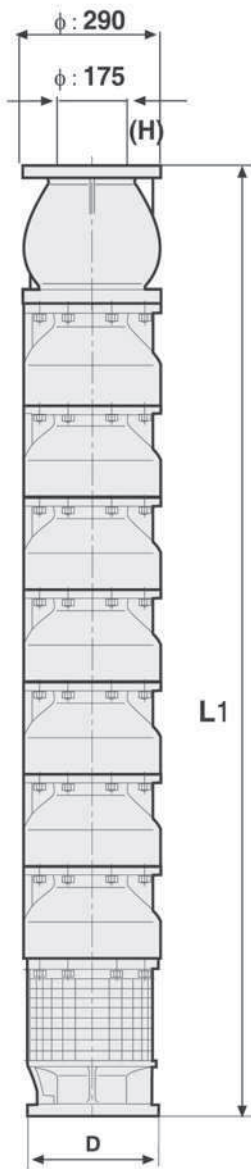
☆ Le potenze indicate sono valide per accoppiamenti standard.  
 Su specifica richiesta possono essere impiegati motori di potenza superiore. /  
 The shown motor ratings are for standard couplings.  
 Motors with more or less ratings can be utilized to client specific request.

★ I dati qui riportati possono essere modificati senza preavviso. /  
 The above data may change without notice.

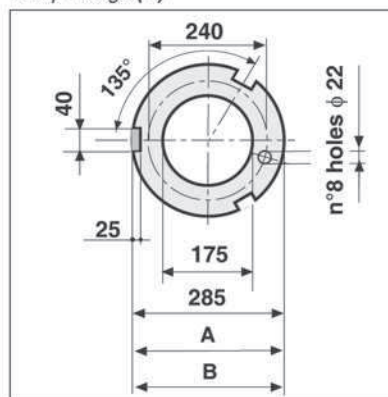


# DX12-12"

## Dimensioni d'ingombro / Overall dimensions encombrement



Pump Flange (H)



Pompa Pump Pompe	DOL	Y/D	Motor
	A	B	D
	mm	mm	mm
DX12.. + 8"	290	290	192
DX12.. + 10"	290	290	237
DX12.. + 12"	290	290	286
DX12.. + 14"	290	290	338

Pompa / Pump	Motore/Motor 8"		Motore/Motor 10"		Motore/Motor 12"		Motore/Motor 14"	
	L1 mm	Weight kg	L1 mm	Weight kg	L1 mm	Weight kg	L1 mm	Weight kg
DX12..1	881	115						
DX12..2	1061	142						
DX12..3	1241	169	1241	174				
DX12..4	1421	196	1421	201				
DX12..5	1601	223	1601	228	1627	238		
DX12..6			1781	255	1807	265		
DX12..7			1961	282	1987	292	1987	302
DX12..8			2141	309	2167	319	2167	329
DX12..9			2321	336	2347	346	2347	356